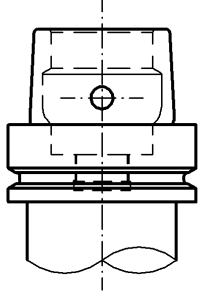
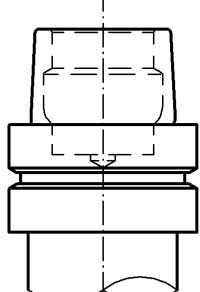


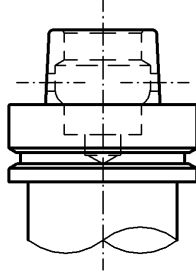
Antriebskegel
Shank
Cono



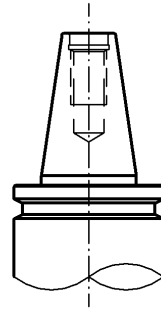
HSK 63 A



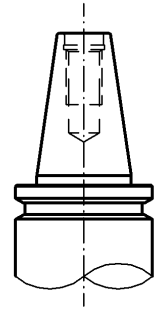
HSK 63 E



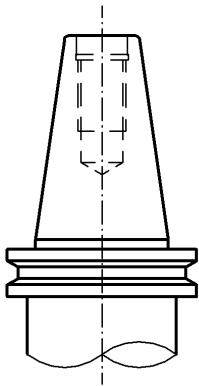
HSK 63 F



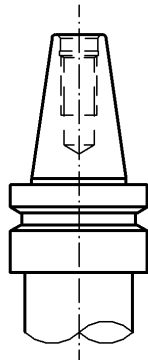
SK 30



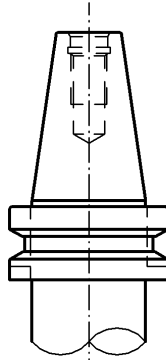
SK 30
ANSI



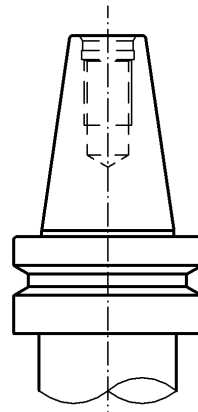
SK 40



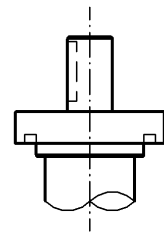
BT 30



BT 35



BT 40



DIVERSE

Maschinen
Machines
Macchine

Accu-Router Alberti Anderson Bacci Balestrini Bermaq Biesse Bulleri Brevetti Busellato CML C.M.S. COSMEC DUBUS Industries EiMa Esseteam/Uniteam Essetre Gannomat Heian Corporation Homag* IMA Klessmann I.S.E. Koch, Leopoldshöhe KOMO Machine MAKA Marunaka Masterwood MAW Nottmeyer MKM International Morbidelli MULTIAX MultiCam	Northwood Omnitech C.R. Onsrud Pade Reich Holz-Her Reichenbacher Routech Royal Seek Rye SAOMAD 2 Scheer SCM Shoda Standard Router Thermwood Torwegge Hüllhorst Trima URBAN Wassmer Weeke* Weinmann* Westphal Working Process Yasaka
---	--

* exclusive