

COMPACT LINE:

DUO	S7U; E5
QUATTRO	E5
FLEX	S7U; 05; E5; SE5

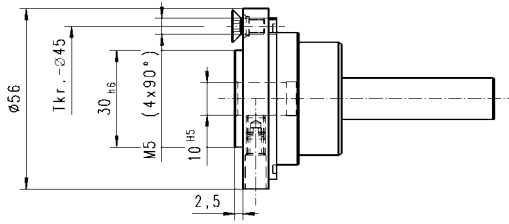
HIGH PERFORMANCE:

MONO	E5; E6; S7U; 05
DUO	E5; E6; S7U; 05
QUATTRO	E5
FLEX	S7U; 05; E5; SE5
FORTE	E6; V3
MONO SPECIAL:	E5; E6; S7U; 05
ECKE/ CORNER/ SPIGOLO	12
UNTERFLUR/ UNDERFLOOR/ DA SOTTO	9U
HOBEL/ MOULDER/ PIALLA	H30; H35

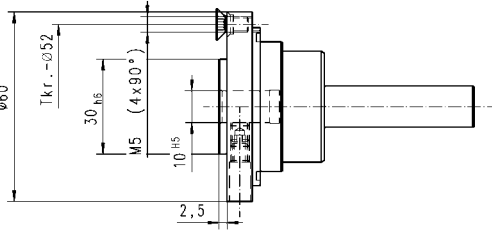
HEAVY DUTY :

MONO	S7U; 05; E5; E6; SD; 07; 09; 01; 13; 03; 04; 06;
DUO	S7U; 05; E5 E6; SD; 07; 09; 01; 13; 03; 04; 06;
FLEX	S7U; 05; E5; SE5;
FORTE	E6; V3
MONO SPECIAL	7U; 05; E5; E6; SD; 07; 09; 01; 13; 03; 04; 06; 11
HOBEL/ MOULDER/ PIALLA	H30; H35

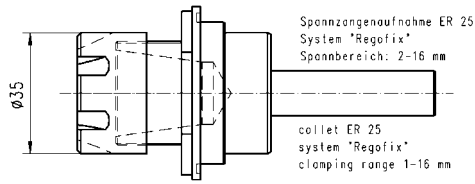
S7U=



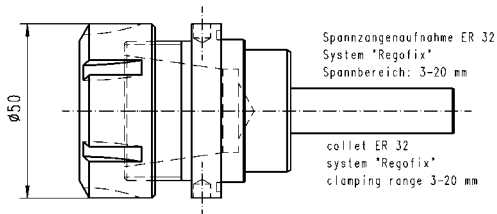
O5=
(Homag)



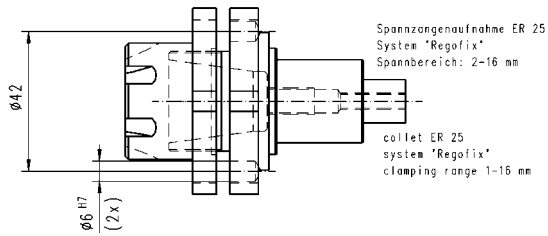
E5=



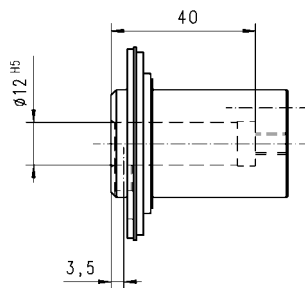
E6=



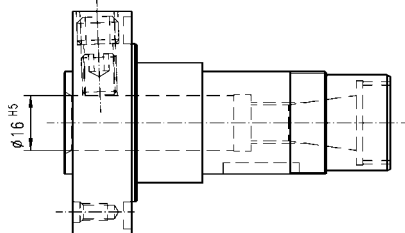
SE5=



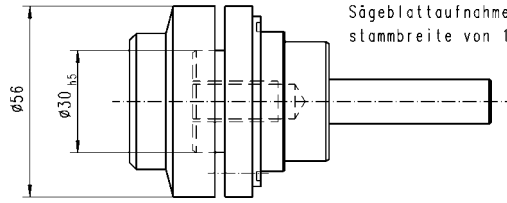
9U=



V3=

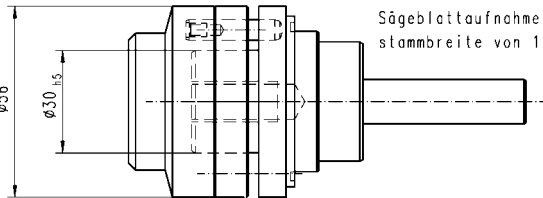


50=



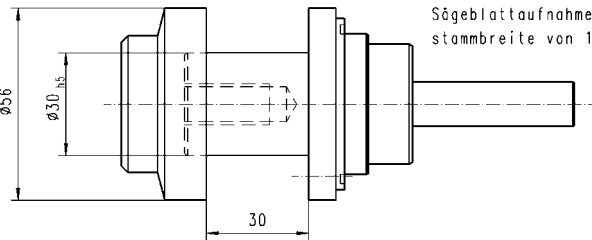
Sägeblattaufnahme für Sägeblattstammbreite von 1,5-6 mm.

07=



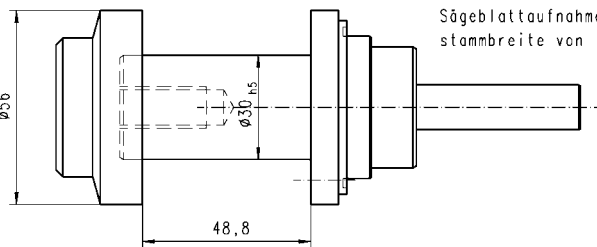
Sägeblattaufnahme für Sägeblattstammbreite von 1,5-16 mm.

09=



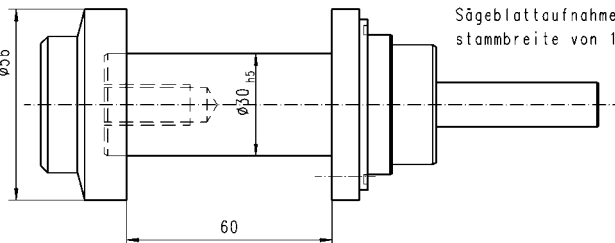
Sägeblattaufnahme für Sägeblattstammbreite von 1,5-33 mm.

01=



Sägeblattaufnahme für Sägeblattstammbreite von 1,5-51,8 mm.

13=



Sägeblattaufnahme für Sägeblattstammbreite von 1,5-63 mm.

03=

